

TMH

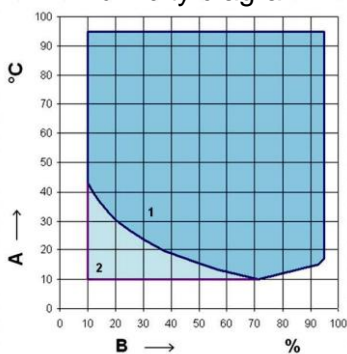
TEMPERATURE AND CLIMATIC TESTS

ENVIRONMENTAL SIMULATION

Environmental chamber for temperature and humidity tests, for laboratories, volumes of 34, 64 and 100 litres. This compact, quiet and powerful material enables you to realise your temperature and humidity tests directly at your workstation.



Humidity diagram



1 Standard
2 Extended humidity range with external dryer

Standard equipment :

- on wheels
- large viewing window with test space light
- standard power supply (single phase 230V)
- one 50 mm diameter porthole
- 1 shelf
- integrated water tank
- air-cooled refrigeration unit
- psychrometric humidity measuring sensor
- TCP/IP interface
- USB interface

Options:

- demineralisation unit
- specific voltage
- additional shelves
- mini supervisor Spirale (see next page)
- etc.

Elérhetőek vagyunk:

www.brueel.hu

Tel.: 06 1 215 8305
bruel@t-online.hu
Budapest IX.
Telepy u. 2/F

B & K Components Kft.

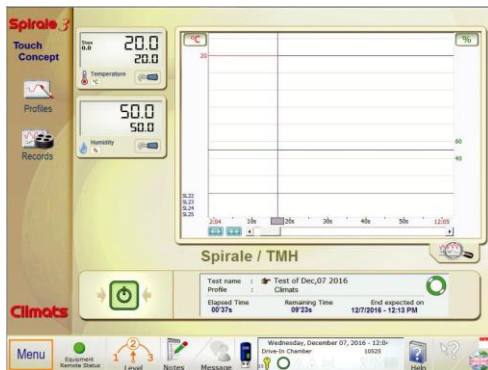
AZ ÖN PARTNERE A MÉRÉSTECHNIKÁBAN

Technical data

DESIGNATION	TMH 30	TMH31	TMH32	TMH60	TMH61	TMH61	TMH100	TMH101	TMH102
Space volume (l)	34			64			100		
PERFORMANCE									
Maximum temperature (°C)	+180			+180			+180		
Minimum temperature (°C)	+10	-40	-70	+10	-40	-70	+10	-40	-70
Cooling temperature variation (°C/min)	6	5	5	5	5	4	5	5	4
Heating temperature variation (°C/min)	4			4			3		
TEMPERATURE TESTS									
Temperature deviation in time ⁽¹⁾ (°C)	±0.3 to ±1								
Temperature homogeneity in space ⁽²⁾ (°C)	±0.5 to ±2								
CLIMATIC TESTS									
Temperature range (°C)	+10 to +95								
Humidity range (% HR)	+10 to +95								
Temperature deviation in time ⁽¹⁾ (°C)	±0.3 to ±0.5								
Temperature homogeneity in space ⁽²⁾ (°C)	±0.5 to ±1.5								
Deviation humidity in time (%HR)	±1 to ±3								
Water feature for humidity	demineralised water : PH = 6-7; conductivity = 5 to 20 µS/cm								
Consuming water (24h. +40°C / 92 % HR)	2 litres /24h								
TEST SPACE DIMENSIONS (mm)									
Width	350			470			490		
Depth	290			340			405		
Height	310			400			500		
EXTERNAL DIMENSIONS (mm)									
Width	640			760			780		
Depth	930			980			1135		
Depth with optional base frame	750			795			950		
Height	1005			1095			1195		
Height with optional base frame	1685			1775			1875		
SHELVES									
Maximum number shelves	5			7			6		
Minimum height between 2 shelves (mm)	50			50			62		
TECHNICAL INFORMATIONS									
Electrical connection	230 V ±10%, 50Hz, 16A								
Weight (kg)	154	-	194	210	230	270			
Weight (with optional base frame) (kg)	200	220	235	250	270	310			
Sound pressure level (dB (A))	56	59	56	59	56	59			
Environmental conditions	from +10°C and +27°C / max HR 75%								

The performance values refer to +25°C.
(1) in center of test space

(2) relative to the set value in temperature range from t_{min} to +150°C
(3) measured in 1m distance from the front and in 1.6m height at free field measurement



Homepage of mini supervisor SPIRALE

Your chamber can be piloted via the mini supervisor SPIRALE (as an option). You can remote control your equipment.

We design and manufacture customized solutions to meet all requirements. Contact us.

Features of the mini supervisor are :

- tests programming,
- automatic launch of cycles tests,
- delayed start and stop
- tests recording
- tracking alarm
- integration of additional measurement options
- multi-languages format software

Elérhetőek vagyunk:

www.bruel.hu

Tel.: 06 1 215 8305
bruel@t-online.hu
Budapest IX.
Telepy u. 2/F

B & K Components Kft.

AZ ÖN PARTNERE A MÉRÉSTECHNIKÁBAN